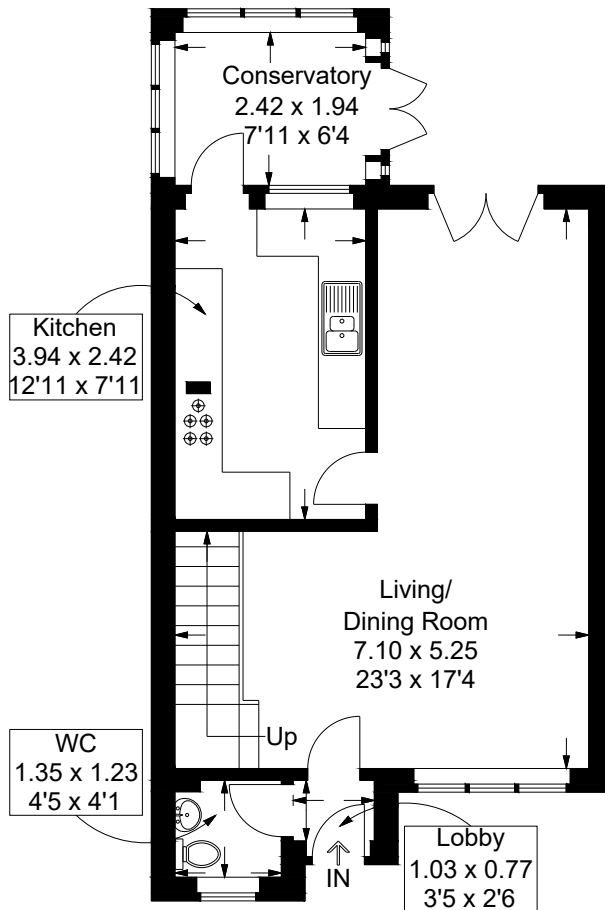


# Tangiers Road, Baffins

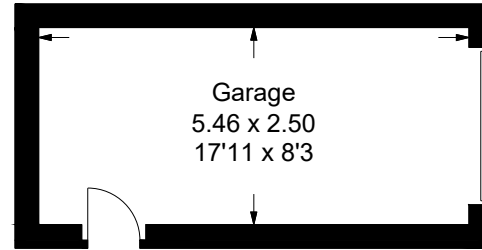
Approximate Gross Internal Area = 83.6 sq m / 900 sq ft

Outbuilding = 14.1 sq m / 152 sq ft

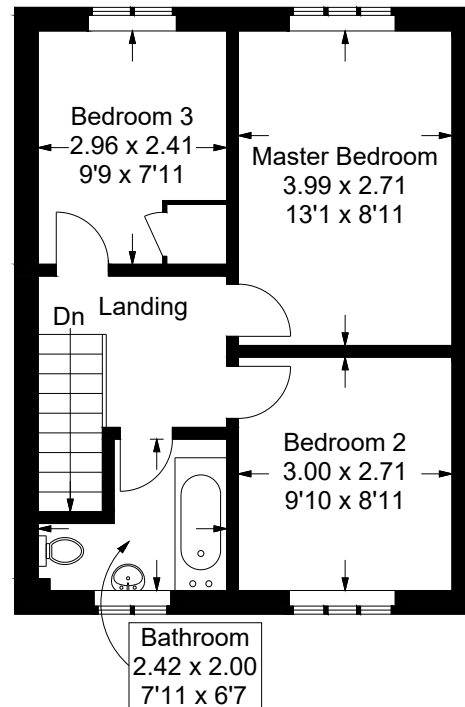
Total = 97.7 sq m / 1052 sq ft



Ground Floor



Outbuilding



First Floor

This plan is for layout guidance only. Not drawn to scale unless stated. Windows and door openings are approximate. Whilst every care is taken in the preparation of this plan, please check all dimensions, shapes and compass bearings before making any decisions reliant upon them.